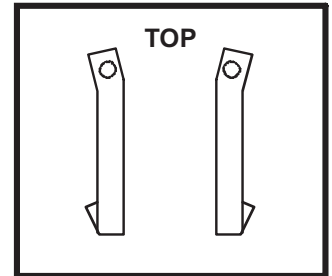
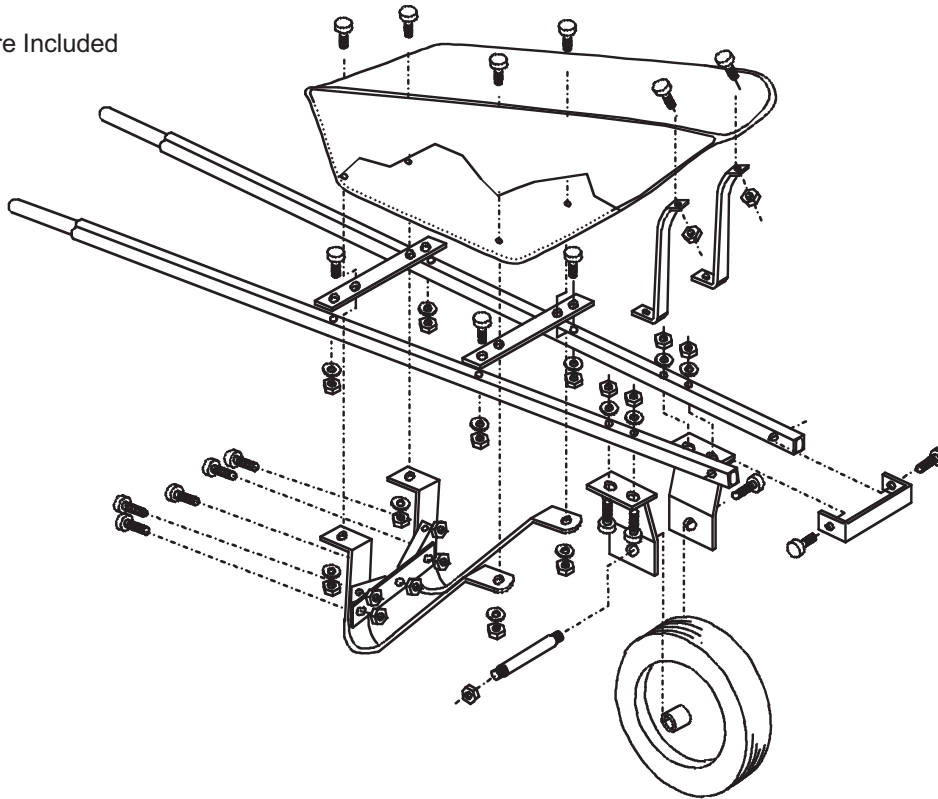


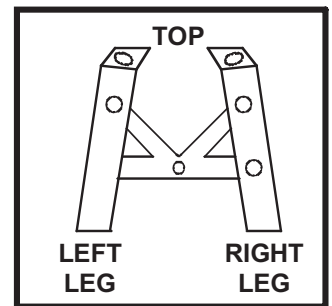
## CONTENTS OF CARTON:

- 2 - Flat Straps
- 2 - Axle Supports
- 1 - Axle
- 1 - Wheel
- 2 - 3/8" Hex Axle Nuts
- 2 - Tray Supports
- 1 - Nose Piece
- 2 - Legs
- 1 - Long Leg Brace
- 2 - Shorter Leg Braces

## Hardware Included



Front view of tray supports.



Rear view of leg assembly.

## ASSEMBLY INSTRUCTIONS - WOOD HANDLE

**DO NOT WRENCH TIGHTEN NUTS UNTIL ENTIRE WHEELBARROW HAS BEEN ASSEMBLED.**

Use 3/4" bolts for leg braces; 1" bolts for tray and 2 1/2" for balance.

- Step 1** Assemble leg assembly. **IMPORTANT:** Look at insert to determine left leg from right leg. Attach longest leg brace in bottom holes of legs. Attach the two shorter leg braces to top holes of legs. Now attach to center hole. *See illustration.*
- Step 2** Attach nose piece to handles.
- Step 3** Attach flat straps to handles. Longest strap attaches to rear holes of handles. The shorter strap attaches to the next set of holes in the handles. *See illustration. Both straps attach through the exterior holes in the straps.*
- Step 4** Next, the tray handle assembly and leg assembly will now be bolted together. Insert 1" bolt through tray, through hole in flat strap on handle and through hole in leg assembly. Apply nut. Tighten finger tight.
- Step 5** Attach tray supports. Use 1" bolts. **CAUTION:** Determine left support from right. Make sure tray supports are attached as illustrated. You now have tray supports attached to the tray only.
- Step 6** Attach axle supports to handles. Attach lower end of tray supports to the axle supports as illustrated.
- Step 7** Insert axle in wheel. Attach axle and wheel to axle supports as illustrated. Now apply hex nuts. Now wrench tighten all nuts.