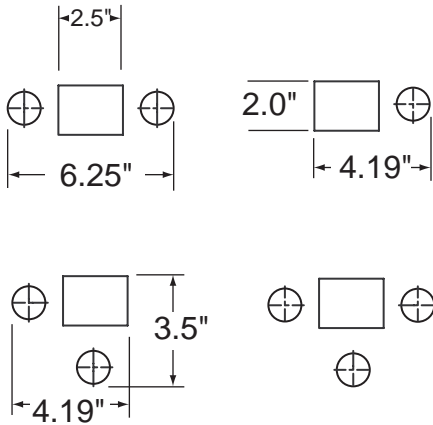
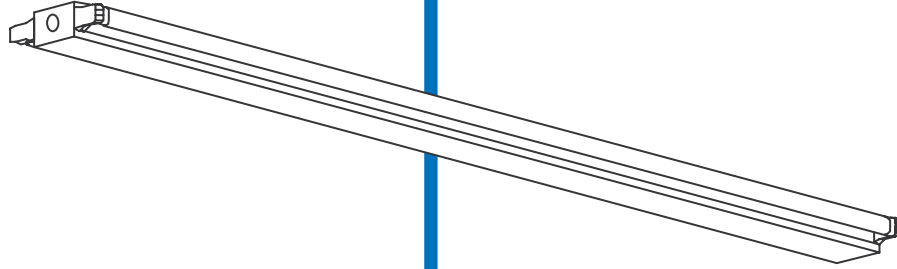


SERIES 202SM

Mini Strip for
Side Mount & Right Angle



UNION MADE IN THE USA.

ORDERING:

NOMINAL SIZE	LAMPS	CATALOG NUMBER
4 ³ / ₈ "X 2'	1-FO17	202SM-124T8
4 ³ / ₈ "X 3'	1-FO25	202SM-136T8
4 ³ / ₈ "X 4'	1-FO32	202SM-148T8
4 ³ / ₈ "X 6'	2-FO25	202SM-136-2T8
4 ³ / ₈ "X 8'	2-FO32	202SM-148-2T8
4 ³ / ₈ "X 2'	2-FO17	202SM-224T8
4 ³ / ₈ "X 3'	2-FO25	202SM-236T8
4 ³ / ₈ "X 4'	2-FO32	202SM-248T8
4 ³ / ₈ "X 2'	3-FO17	202SM-324T8
4 ³ / ₈ "X 3'	3-FO25	202SM-336T8
4 ³ / ₈ "X 4'	3-FO32	202SM-348T8
4 ³ / ₈ "X 6'	4-FO25	202SM-236-2T8
4 ³ / ₈ "X 8'	4-FO32	202SM-248-2T8
4 ³ / ₈ "X 6'	6-FO25	202SM-336-2T8
4 ³ / ₈ "X 8'	6-FO32	202SM-348-2T8

INSERT VOLTAGE AT END OF CATALOG NUMBER

FEATURES:

- COMBINATION SOCKET PLATE AND BALLAST COVER WITH PREWIRED SNAP-IN LAMPHOLDERS
- AVAILABLE 18" TO 16' (TANDEM WIRED)
- COMBINATION END PLATE / CHANNEL COUPLER FURNISHED
- POST PAINTED HIGH REFLECTANCE POWDER COAT FINISH - OPTIONAL



NOTES:

1. FOR 2 LIGHT RIGHT ANGLE STRIPS DESIGNATE "SMX"

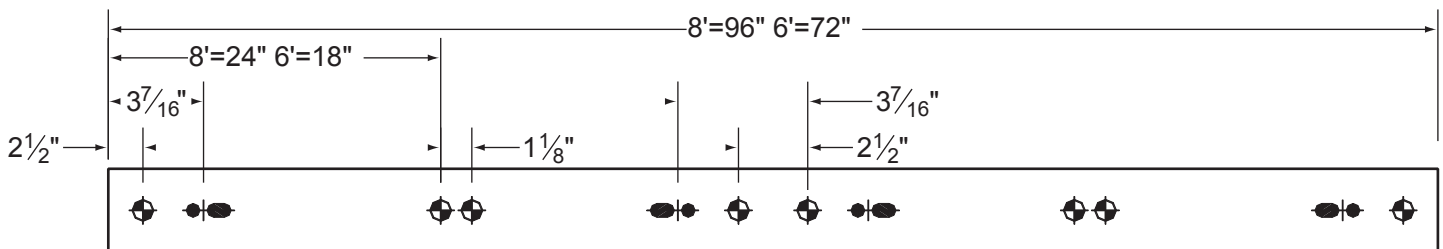
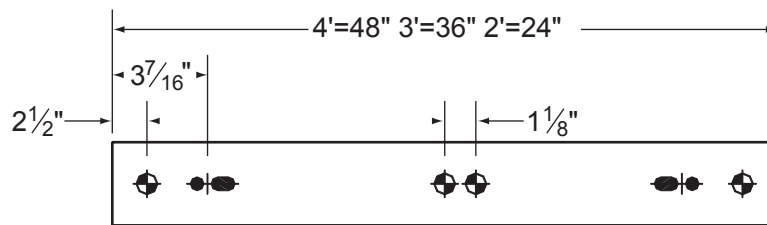
MANUFACTURING
1715 KIBBY ROAD - MERCED - CALIFORNIA - 95340
(209) 723-9120 - FAX: (209) 723-9131

SALES OFFICE
14722 WICKS BLVD. - SAN LEANDRO - CALIFORNIA - 94577-6718
(510) 667-6950 - FAX: (510) 667-6959

BACK DETAIL

 "S" HOOK SLOT
 7/8" K.O.

Back detail symbols



NOTE
 All fixtures must be installed, wired and grounded in accordance with the National Electric Code and all other applicable codes.

!!! WARNING !!!
 RISK OF FIRE OR ELECTRICAL SHOCK. ELECTRICAL PARTS MAY BE DAMAGED WHEN DRILLING OR USING "TEK" SCREWS FOR INSTALLATION OF MOUNTING HARDWARE. CHECK ENCLOSED WIRING AND COMPONENTS. USE CAUTION WHEN DRILLING "TEK" SCREWS INTO A BLIND AREA. TO PREVENT WIRING DAMAGE DO NOT EXPOSE WIRING TO SHARP EDGES.

